



## Welcome, to your holiday home in Louth



The Lincolnshire Wolds Area of Outstanding Natural Beauty (AONB) contains the highest ground in eastern England between Yorkshire and Kent, rising to over 150 metres along its western edge. Beneath its rolling chalk hills lies Louth, the Capital of the Wolds.

Louth has been a market town since the 8th century and since that time, has served surrounding villages and farms through its shops, inns and markets. There are no chain store supermarkets or out-of-town shopping centres here; instead, you can spend a pleasant day popping in and out of independent retail shops and being served by friendly shopkeepers. There is an excellent variety of local speciality food shops that make Lincolnshire sausages, plum bread, stuffed chine, and sell Lincolnshire Poacher Cheese and butter, locally produced fruit, vegetables, fish and bread. You can even follow the town 'Food Trail' to sample local delicacies; brochures are available from the Tourist Information Centre.

TV food chef Rick Stein calls Louth "The finest little market town in Britain".

Our Victorian town house, built circa 1892 has been carefully renovated to provide comfortable accommodation for up to three guests.

The house is situated in the Conservation Area of this Georgian market town, just two minutes walk from the historic market place, corn market and fish shambles, yet with private parking that makes it a fine base for a holiday in Lincolnshire. If you prefer to use public transport, we are an easy ten minutes walk from the bus station from where you can reach the railway stations at Lincoln and Grimsby. There is also secure, covered cycle storage just three minutes walk away.

For bookings of 7 nights or longer, we offer a 'welcome pack' of local produce, which includes butter, fresh-baked bread, milk, sausages/bacon and other tasty items (subject to availability).



Kitchen / Dining area

At our centrally heated accommodation, we have:

### Downstairs

A fully equipped kitchen / diner with gas cooker, microwave, fridge etc. and a utility room with washing machine, ironing facilities and airer.

The lounge has a TV, video, DVD and hi-fi plus a selection of CDs, videos, books and games. There is also an information pack





**Lounge**  
detailing local restaurants, pubs, shops and services, and places to visit.

**Upstairs**  
We have one bedroom with a double bed, wardrobe, chair, bedside cabinets with lamps, clock radio, mirrors, hairdryer etc.

The second bedroom has a single bed, chair, wardrobe,

security light by the entrance to the house. We also offer secure, covered bicycle storage just five minutes walk from your holiday home.

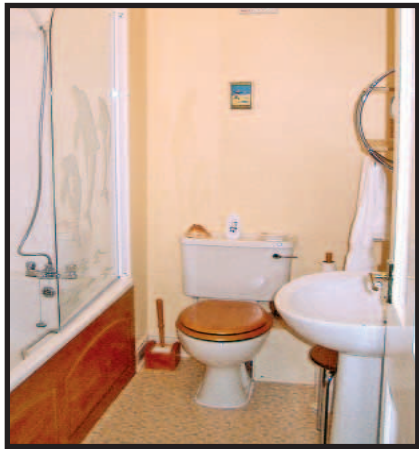
We have a no smoking environment and regret that the house is unsuitable for pets. Whilst children of all ages are welcome, there are no special provisions for babies and toddlers.

**Out and About**

Louth's natural treasure is Hubbard's Hills, its name taken from an eighteenth-century



tenant farmer, Alexander Hubbard. This superb area of naturally formed narrow and winding valley with steep wooded slopes is popular with both locals and visitors alike. Through it flows the River Lud, from where Louth derives its name. We have devised a circular walk from our holiday home, around the parkland, with the



**Bathroom**

mirror, bedside cabinet, lamp and alarm clock.

The bathroom has a shower over the full-size bath and all rooms have radiators, heated by an easy to control gas combi-boiler. The lounge has an extra gas fire for instant warmth.

**Outside**

You have an allocated parking space in a private courtyard with **Allocated parking in the courtyard**



**Main bedroom**



**Hubbard's Hills**

return route along Westgate, with its lovely Georgian houses, and past the magnificent St.James Church that boasts the tallest spire in the country.

Even in winter there is much to see and do. The Lincoln Christmas Market attracts visitors from all over the country and Louth hosts an attractive, though scaled-down version.

Donna Nook, a short drive from Louth, is one of the very few places where breeding grey seals can be viewed at close range. People come from miles around to see them.

*Seals at Donna Nook*



For further information or to make a reservation, contact Geoff or Julia Mullett. Telephone: 01507-354464 or 07816-543538. Email: [info@Louth-HolidayHome.co.uk](mailto:info@Louth-HolidayHome.co.uk) or visit our web site [www.Louth-HolidayHome.co.uk](http://www.Louth-HolidayHome.co.uk) where events around Louth are listed and an availability calendar can be checked. You can also book or make enquiries online.

We look forward to hearing from you.